



February 2022

# TE KARERE O TE KURA TUARUA O WHANGAROA

4157 State Highway 10, Kāeo PO Box 126, KAEO PH: 09 4050199 EMAIL: office@whc.school.nz



Kia ora whanau,

Welcome back to 2022. We hope you had a very enjoyable summer break.

The following pages contain some important information about the start of the year and they contain answers you may have about your tamariki's learning in the Red Traffic Light setting and the start dates for 2022. We have also attached a Ministry of Education document about Covid-19 in education as a general overview.

## Questions about Covid-19 and Traffic Light Red Settings

**Q: Is the school open under Traffic Light Red?**

**A:** Yes, school will be open to all students.

**Q: Does my child have to attend school?**

**A:** Yes. However, if you are concerned about your child's health/wellbeing, please seek advice from your doctor. If you have been advised for your child to remain at home, contact the school office and make an appointment with Ms Donaldson to discuss further.

**Q: Does my child need to be vaccinated to attend school?**

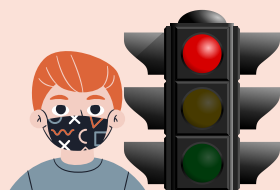
**A:** No. It is not required. However, some activities from outside providers may require proof of vaccination but these activities will not be compulsory for students to attend.

**Q: Do parents/caregivers need to be vaccinated to visit the school?**

**A:** No. But **ALL** visitors must sign in at the office and wear a face-covering unless they have a medical exemption.

**Q: What should I do if my child is unwell?**

**A:** If your child is unwell, whether Covid related or not, keep them at home. Any student who presents with symptoms of any sort at school will be isolated in the sick bay and parents/caregivers must pick them up immediately.



**Q: What happens if someone in the school tests positive with Covid-19?**

**A:** The government guidelines are as follows; once a positive test is confirmed, all students from the same class will be contacted and asked to isolate for 48 hours. If they are symptomatic they should get a test.

**Q: Does my child need to wear a face-covering at school?**

**A:** Yes. All students at Whangaroa College will need to wear a face-covering when indoors (unless they provide a medical exemption). These must be appropriate for school. Bandanas and scarves are not acceptable.

**Q: Will the school provide face coverings?**

**A:** No. You will need to purchase these yourself. If you are using cloth face coverings, they must be washed daily. Disposable face coverings should be changed daily and disposed of responsibly.

**Q: Will my child need to wear a face-covering on the school bus?**

**A:** Students 12 years and older must wear face coverings on the school bus.

**Q: Will there be large gatherings (over 100 people) at school?**

**A:** Under Traffic Light Red, public gatherings without vaccine passports are limited to 25 people.

Therefore, we are unlikely to hold events during this setting. We will update you as changes occur.

**Any further questions about Covid-19 or Traffic Light Red settings at school?  
Ring the school office.**



# 2022 SCHOOL START DATES AND INFORMATION:

**February 1-2:** **TEACHER ONLY DAYS** No students

**February 3-4:** **FIRST AID COURSE** Enrolled Senior students over 16.

## **ACADEMIC COUNSELLING MEETINGS**

**February 8-10:**

- These will be held across three days for all students and their whanau to reflect on 2021, set goals for this year and discuss any support that might be needed. It is a very important conversation between yourself, your child and their whanau teacher and we require all students and their parents/caregivers to attend this meeting before they are placed in classes.
- If you cannot attend a face-to-face meeting, we can do it via phone, but you will still need to make a booking.

**February 11:**

- Classes begin for students who attended their academic counselling meeting in person or by phone.
- All newly enrolled students who have had their enrolment meeting with Ms Donaldson should attend school on this day.

**February 14:**

- New students who have not yet enrolled or returning students who have not had their academic counselling meeting need to contact the school office for an appointment. These will be made when staff are available.



# ACADEMIC COUNSELLING AND ENROLMENT INFORMATION:

## BOOKING AN APPOINTMENT

Parents/Caregivers can book an appointment by phoning the school office on **09 4050199**

OR you can book online using this link:

<https://www.schoolinterviews.co.nz/code/6v83h>

## NEWLY ENROLLED STUDENTS:

- (all age groups) to Whangaroa College in 2022, will need to meet with Ms Leanne Donaldson.
- If you cannot attend a face-to-face meeting, we can do it via phone, but you will still need to make a booking.

## RETURNING YEAR 8-10 STUDENTS

and their parents/whanau will meet with their whanau teacher(s):

**MATAI:** Whaea Nikita Williams and Ms Amanda Ferris

**TAWA:** Mrs Robyn Grey and Mrs Jitka Hyde

**MIRO:** Mr Ben O'Donnell and Mrs Raewyn Cairns-Cowan

**KAURI:** Whaea Stacie Tumoana and Whaea Abby O'Donnell

## YEAR 11-13'S

- Students will meet with Ms Davidson.
- Senior students will also be picking their subjects for the first semester.

When you make your booking, please indicate if you want to complete this meeting over the phone or face to face.

We are looking forward to welcoming all our new and returning students back to school.

Ngā mihi,

Whangaroa College Senior Leadership Team

## Public Health Measures are applied across all CPF settings



### Basic hygiene

Basic hygiene measures include good hand hygiene, cough, and sneeze etiquette, avoid touching your face, and regularly clean and disinfect surfaces.



### Contact tracing

Schools are required to display QR Code posters for the NZ COVID Tracer App. They must also have other contact tracing systems in place, including an attendance register and visitor register.



### Vaccination

Getting vaccinated is a key step to gain more protection against the virus. From 2 January 2022, only fully vaccinated staff and support people can have contact with children and students.



### If you are sick - stay home and get tested

If you have cold, flu or COVID-19 symptoms, stay home. Call your doctor or Healthline on **0800 358 5453** for advice about getting tested. Staff are to observe children on arrival, checking for symptoms. Those presenting as unwell will be asked to go home or arrange for parents or caregivers to come and pick up.



### Ventilation

Indoor spaces should be well ventilated, for example by opening windows, doors, and any vents. If mechanical ventilation is used, make sure the ventilation system is regularly maintained.

## Case management across all CPF settings



Cases of COVID-19 in a school will continue to be managed across the framework. Schools will work with the Ministry of Education, following public health guidance, to identify who else may need to self-isolate and get tested. Contact tracing systems will support this process. Letter templates and other supports will be provided, to assist with communications to the community.



Closing schools on site is an unlikely option at all colours of the framework. However, it may be considered where there is a high volume of cases in a school.



Cases in school hostels will be managed directly by public health, as there is a greater risk of spread in a hostel, than there is in a school setting.

## Additional mitigations at each CPF setting

### GREEN

Schools and kura are **OPEN** for on site learning for all students.



Face coverings are encouraged but not required.



Children with complex medical needs are encouraged to take additional precautions when leaving home. Parents, caregivers and students will need to work with the school to develop a plan to support attendance on site.

### ORANGE

Schools and kura are **OPEN** for on site learning for all students.



Face coverings are required on school transport for ākonga aged 12 and up.

Face coverings are encouraged but not required indoors at school.



Children with complex medical needs are encouraged to take additional precautions when leaving home. Parents, caregivers and students will need to work with the school to develop a plan to support attendance on site.



Staff are able to work across more than one group/class of students within the school.

Staff such as **itinerant music teachers and relief teachers** will be able to work across different schools.



Curriculum related activities - Large activities with students, if they are to go ahead, should take place in well-ventilated areas or outdoors.



Non-curriculum related events may only go ahead if a vaccination certificate is required. If bringing others on site, including parents and caregivers, any general rules for events applicable at the time will apply.

### RED

Schools and kura are **OPEN** for on site learning for all students.



Face coverings are required:

- for all ākonga Years 4 and up when indoors or in close contact with others
- for staff working to provide or support the provisions of education for Years 4 and up
- on school transport for all ākonga aged 12 and up.



Curriculum related activities - Large activities with students should not go ahead unless held outdoors.



Non-curriculum related events should be limited and may only go ahead if a vaccination certificate is required.



No external students on site for non-curriculum related inter-school activities.



Essential support services and agencies such as **learning support service may be on site**. Minimise attendance on site for non-essential services as much as possible.



No non-essential visitors on site.



Children with complex medical needs, can seek advice from their health professional about whether it is appropriate to come to school. Parents, caregivers and students will need to work with the school to develop a plan to support attendance on site.



Support for off site learning will be provided for those who are advised to remain at home.